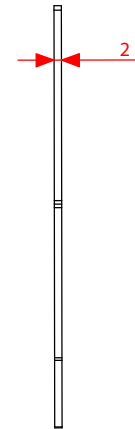
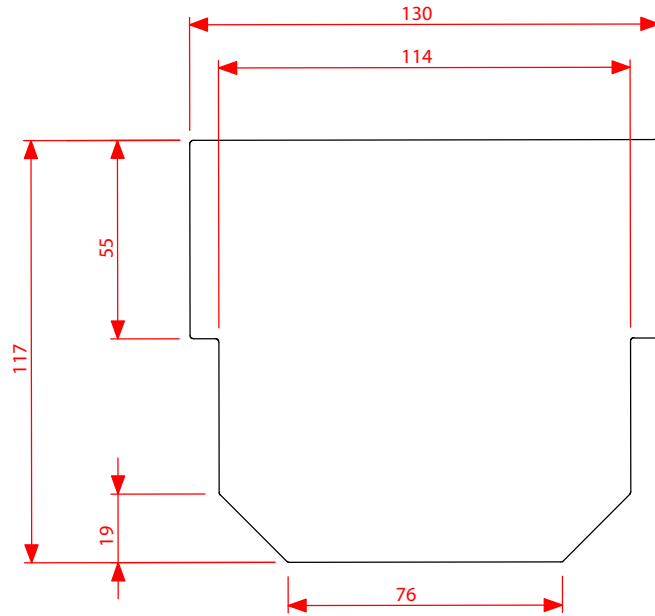


# ALLPROOF

INDUSTRIES

DESCRIPTION

CODE	FINISH
PC125EC SS	STAINLESS STEEL



REVISIONS	CHANGES	DRAWN	DATE	DO NOT SCALE DRAWING		TITLE	
				REQUESTED DAN.T	DATE 23.3.2015	SS ENDCAP FOR PC125 CHANNEL	
				DRAWN S.L.	DATE 23.3.2015		
				APPROVED	DATE		
				MATERIAL		APPLICABLE STANDARD :	
				2MM SS, GRADE TO BE CONF		PART NUMBER DTSSE23315-01	
TOOL NUMBER 0.0				A4		SCALE 1:2(UOS)	
PART WEIGHT(GRAMS) 0.0				UNITS = MM		SHEET 1 OF 1	
FILE S:/CAD FILES/2014/DRAINAGE/PC/CHANNELS/SS ENDCAP_PC125							

DISCLAIMER : THE DESIGN SUGGESTION IS PROVIDED FOR EVALUATION PURPOSES ONLY. IT IS NOT TO BE CONSIDERED A FULL DESIGN AS WE ARE NOT THE CONSULTING ENGINEERS; WE ARE MANUFACTURERS. WE ARE NOT PRIVY TO ALL THE INFORMATION PERTAINING TO THIS MATTER AND WE HAVE NO CONTROL OVER THE PROJECT INSTALLATION OF THE PRODUCT. THE DESIGN SUGGESTION IS PROVIDED WITHOUT OBLIGATION. DESIGN IS TO BE CONFIRMED AND APPROVED BY THE ARCHITECT, HYDRAULICS ENGINEER, OR PROJECT MANAGER. ACCURATE MEASUREMENTS SHOULD BE CONFIRMED BY THE PERSON APPROVING THE DESIGN. ALLPROOF ACCEPTS NO LIABILITY FOR THE IMPROPER USE OF THE DESIGN SUGGESTION.