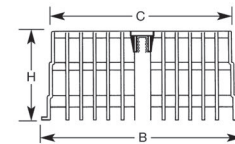
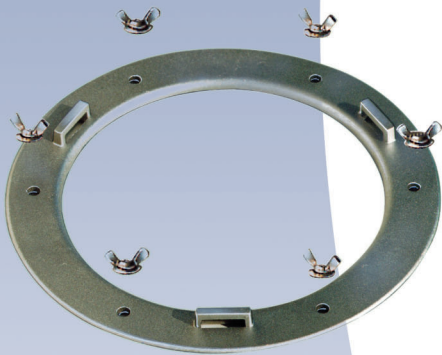
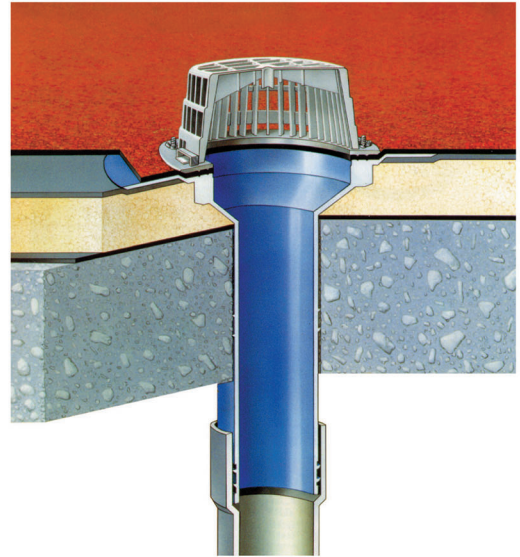
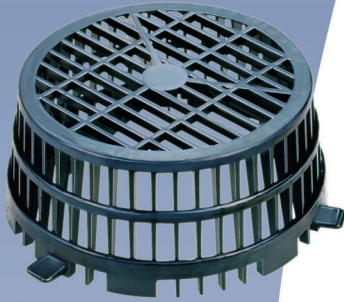


SUREFLOW

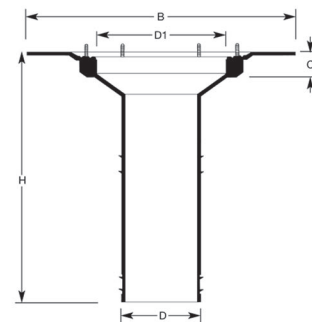
SERIES

Roof Outlets by ITALPROFILI



DOME GRATE DIMENSIONS (mm)

B	180
H	80
C	160



BODY DIMENSIONS (mm)

SIZE	80	100	150
B	340	340	340
H	330	330	330
D	75	100	150
D1	170	170	170
C	30	30	30

Designed and manufactured in Italy by Italprofili, the SUREFLOW series is distributed in New Zealand by Allproof Industries.

The SUREFLOW series of roof outlets is one of the best means of connecting a roof system to an outlet drain and is ideal for use on flat roof applications for either commercial or residential buildings.

The fastening and the seal of the membrane is achieved mechanically and thanks to its versatility the drain unit can be used with all types of waterproofing materials. The unit and its accessories have been researched in detail giving a product which far surpasses the characteristics of other normal products currently available.

DESCRIPTION

The SUREFLOW consists of three main components:

BODY: The body of the unit consists of a flexible circular flange with 6 stainless steel posts. A flat tunnel 30mm thick and 170mm in diameter ensures that even storm water will flow quickly into the unit. The length of the body is 330mm and pipe diameters available are 80-100-150 mm.

CLAMP RING: The unit is supplied with a corrosion resistant 5076 aluminium clamp ring, 3.5mm thick with a diameter off 220mm. The clamp ring has 3 locating lugs for the dome grate and 6 holes for the fixing of the clamp ring. The fixing is done using 6 stainless steel butterfly nuts and washer's to ensure a perfect seal with all the waterproofing membranes.

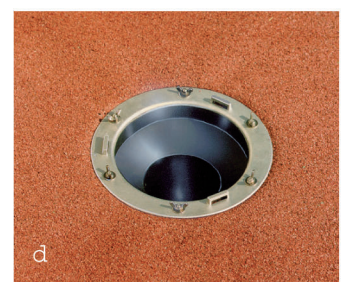
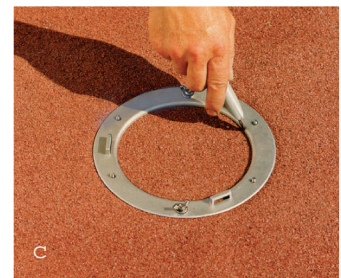
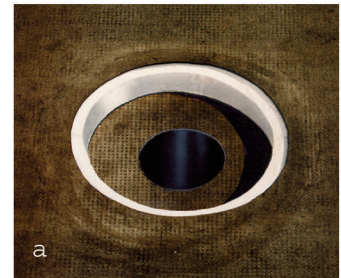
DOME GATE: The dome grate is 80mm high, has a diameter at its base of 180mm and 160mm at its top. It clips into position on the locating lugs on the clamp ring.

MATERIALS

The body and dome are made from IGOM.EE synthetic rubber. The specially formulated IGOM.EE has extremely high resistance to breakdown by sunlight, ozone and other chemical or atmospheric agents. The excellent physical and chemical characteristics of IGOM.EE can fulfil all the elastic characteristics required of the dome.

INSTALLATION METHOD

1. Insert the Sureflow spigot inside the PVC drain pipe. Fasten the unit to substrate mechanically or with a construction adhesive/sealant.
2. Install the waterproofing membrane.
3. Lay the membrane over the posts so that their position is evident. Carefully cut the membrane over the posts so that they protrude through the membrane.
4. Place the ring over the posts and hold in position with 2 bolts. Cut the membrane from inside the ring.
5. Position and fasten the other bolts and washer's, install the dome grate.



DESCRIPTION	SPECIFICATION CODE
80mm sureflow roof drain with clamp ring and dome grate	Sureflow80
100mm sureflow roof drain with clamp ring and dome grate	Sureflow100
150mm sureflow roof drain with clamp ring and dome grate	Sureflow150