

SCUPPER

SERIES

ANGLED ROOF OUTLETS

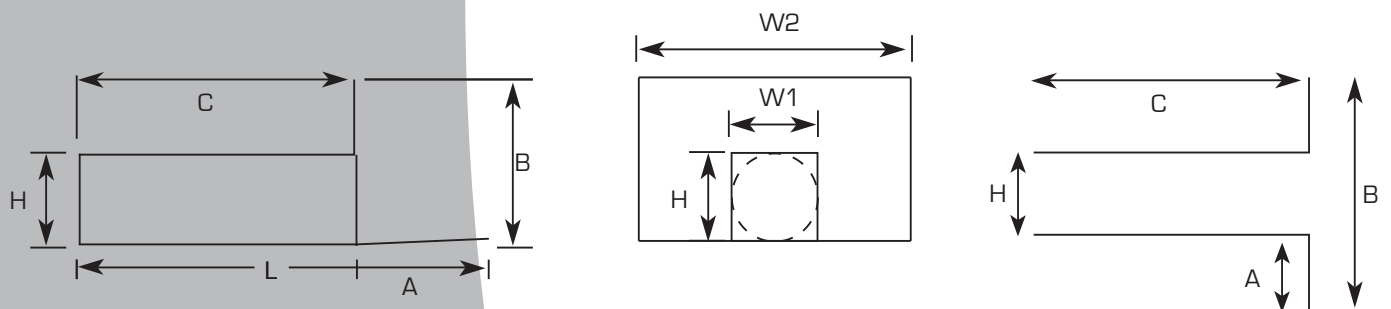
DESCRIPTION

The main benefit of the Scupper Drain is the flexibility of application; they can be used as both primary and secondary overflows. Scuppers are ideal for horizontal drains with free waterfall, terraces / decks, flat roof, box gutters, parapets and roofs with vertical walls angled at 90°, covered with roofing membranes.



MATERIALS

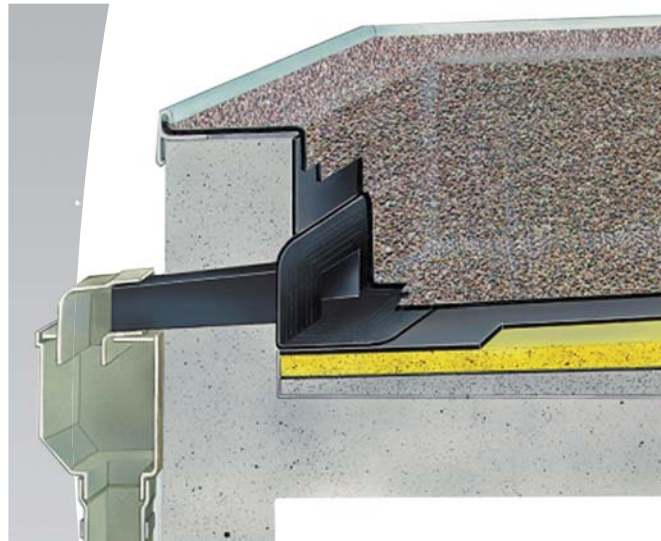
The material that makes up Allproof Scuppers has extremely high resistance to breakdown by sunlight, ozone and other chemicals or atmospheric agents. The excellent physical and chemical characteristics of Allproof Scuppers make them ideal as a flange surface for most types of waterproofing membranes.



| SCUPPER DIMENSIONS | | | | | | | OVERFLOW DIM. | |
|--------------------|--------|--------|----------|---------|-----------|---------|---------------|----------|
| Size | SCUP50 | SCUP65 | SCUPRD80 | SCUP100 | SCUPRD100 | SCUP200 | Size | OFLOW200 |
| A | 120 | 120 | 115 | 120 | 115 | 120 | A | 52.2 |
| B | 98 | 140 | 175 | 180 | 175 | 135 | B | 185 |
| C | 295 | 425 | 500 | 425 | 500 | 400 | C | 400 |
| H | 40 | 65 | 80 | 100 | 100 | 80 | H | 80 |
| L | 415 | 545 | 615 | 545 | 615 | 520 | W1 | 200 |
| W1 | 50 | 97 | 80 | 100 | 100 | 200 | W2 | 315 |
| W2 | 285 | 350 | 350 | 350 | 350 | 410 | | |

INSTALLATION METHOD

1. Insert the Scupper Drain in the hole through the wall and at the same time mark the point to cut in relation to the thickness of the wall.
2. The Scupper should be installed with a gradient of 3°.
3. Fasten the Scupper to substrate mechanically or with a construction adhesive/sealant.
4. When installing into rainwater head, the cutting of the Scupper shaft shall be cut at 45° with the top edge longer than the bottom. A Scupper adapter can also be used to join the Scupper to the down pipe.
5. Lay waterproofing membrane over Scupper outlet. Welding or adhering the membrane to the Scupper flange can be done with heat torch or adhesives depending on membrane type. Ensure adhesion to whole flange surface.
6. Cut membrane around or dish into Scupper shaft. If using Butyl Rubber, always insure a lap tape is used on all exposed surfaces.
7. Insert the Leaf Grate.



SPECIFICATION

Supply and installation of the Scupper Drains with an angle of 90°

The flange area is flexible and the shaft connected to down pipes using a Scupper Adapter or Rainwater head. The Scupper can be completed with a Leaf Grate.

| Specification Code | Description |
|--------------------|--|
| SCUP50 | 50 x 40mm Scupper Drain |
| SCUP65 | 65 x 100 Scupper Drain |
| LG65 | Leaf Grate for 65 x 100 Scupper Drain |
| SA65-80 | Scupper Adaptor for SCUP65 to 80mm down pipe |
| SCUPRD80 | 80mm Round Scupper Drain |
| SCUP100 | 100 x 100mm Scupper Drain |
| LG100 | 100 x 100mm Leaf Grate for Scupper Drain |
| SA100-80 | Scupper adaptor for SCUP100 to 80mm down pipe |
| SA100-100 | Scupper adaptor for SCUP100 to 100mm down pipe |
| SA100-RD100 | Adaptor for SCUP100-100 Horizontal Pipe |
| SCUPRD100 | 100mm Round Scupper Drain |
| SCUP200 | 200 x 75mm Scupper Drain |
| OFLOW200 | 200 x 75 Overflow Drain |