



Vision Series

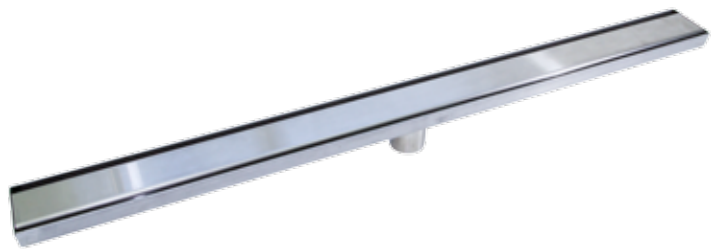
stainless steel linear drainage

the vision series is an all stainless steel shower channel and grate system, available off the shelf from Allproof. Finally a linear shower system with the quality of all stainless steel and the convenience of ready made sizes.

At 80mm wide and 25mm deep the vision comes in four lengths, 800, 900, 1000, and 1200.

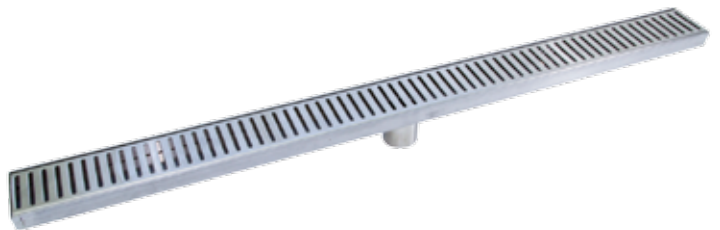
horizon

Product Codes	
V800H	800mm Horizon Channel
V900H	900mm Horizon Channel
V1000H	1000mm Horizon Channel
V1200H	1200mm Horizon Channel



sunrise

Product Codes	
V800S	800mm Sunrise Channel
V900S	900mm Sunrise Channel
V1000S	1000mm Sunrise Channel
V1200S	1200mm Sunrise Channel



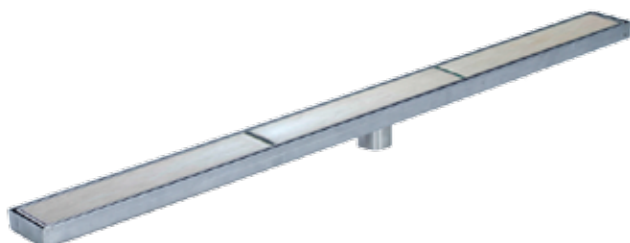
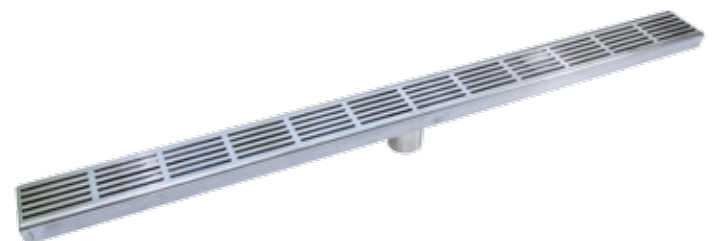
equator

Product Codes	
V800E	800mm Equator Channel
V900E	900mm Equator Channel
V1000E	1000mm Equator Channel
V1200E	1200mm Equator Channel



vapour

Product Codes	
V800V	800mm Vapour Channel
V900V	900mm Vapour Channel
V1000V	1000mm Vapour Channel
V1200V	1200mm Vapour Channel

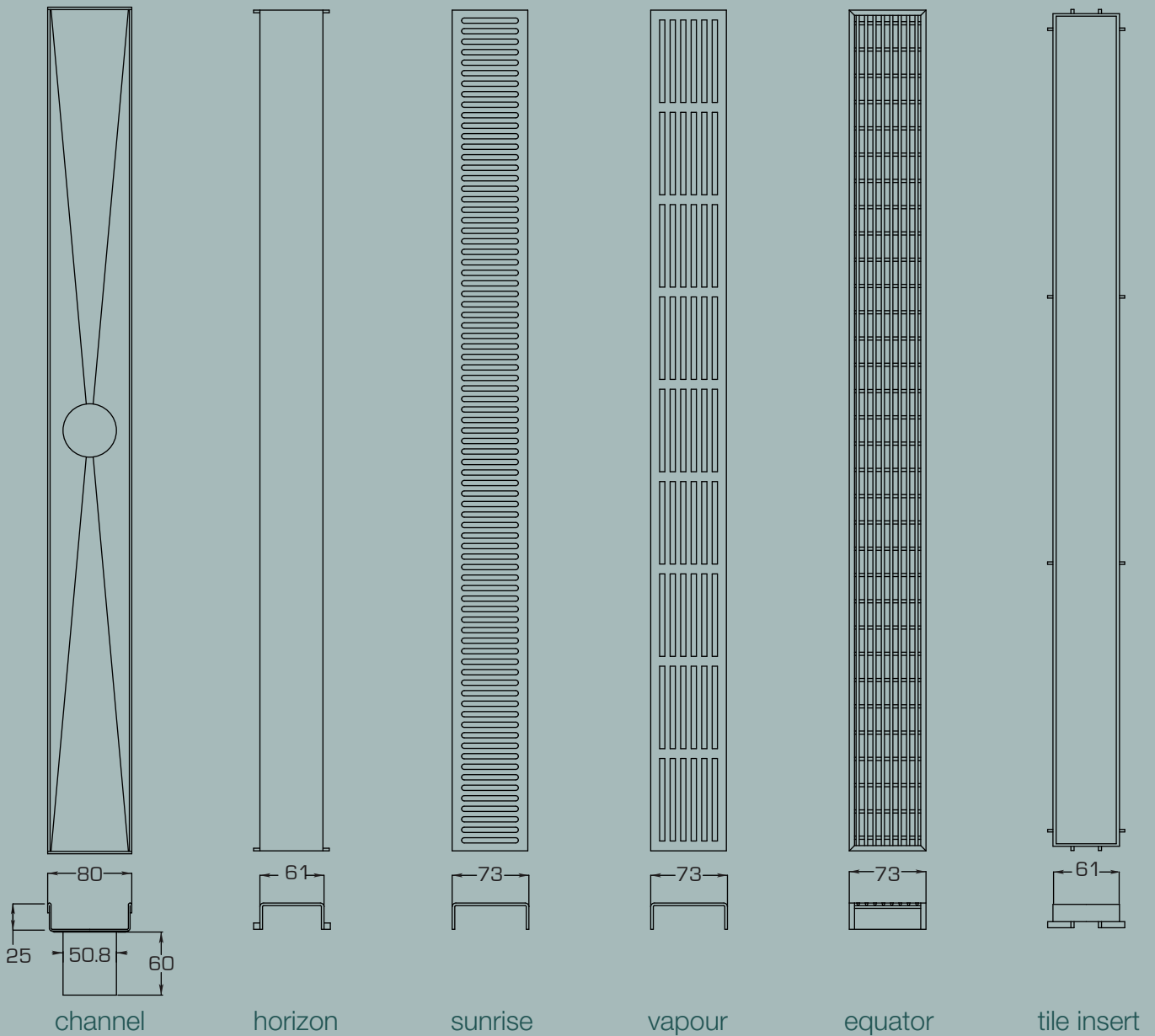


tile insert*

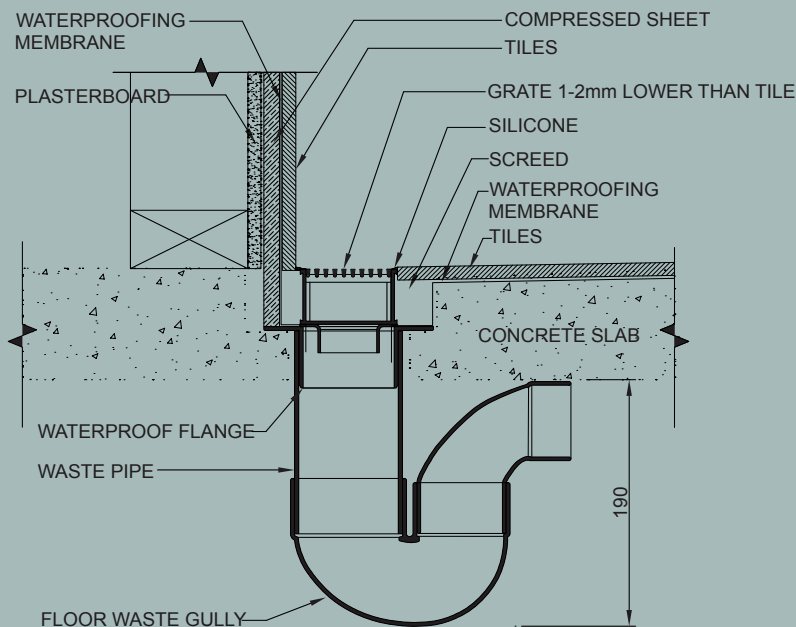
Product Codes	
V800TI	800mm Tile Insert Channel
V900TI	900mm Tile Insert Channel
V1000TI	1000mm Tile Insert Channel
V1200TI	1200mm Tile Insert Channel

* Finished product will differ depending on tiles used.
Tiles not supplied with insert.

technical specifications



installation



ALLPROOF
INDUSTRIES

17 Bay Park Place,
Beach Haven,
Auckland, NZ
Ph: +64 9 481 8020
www.allproof.co.nz