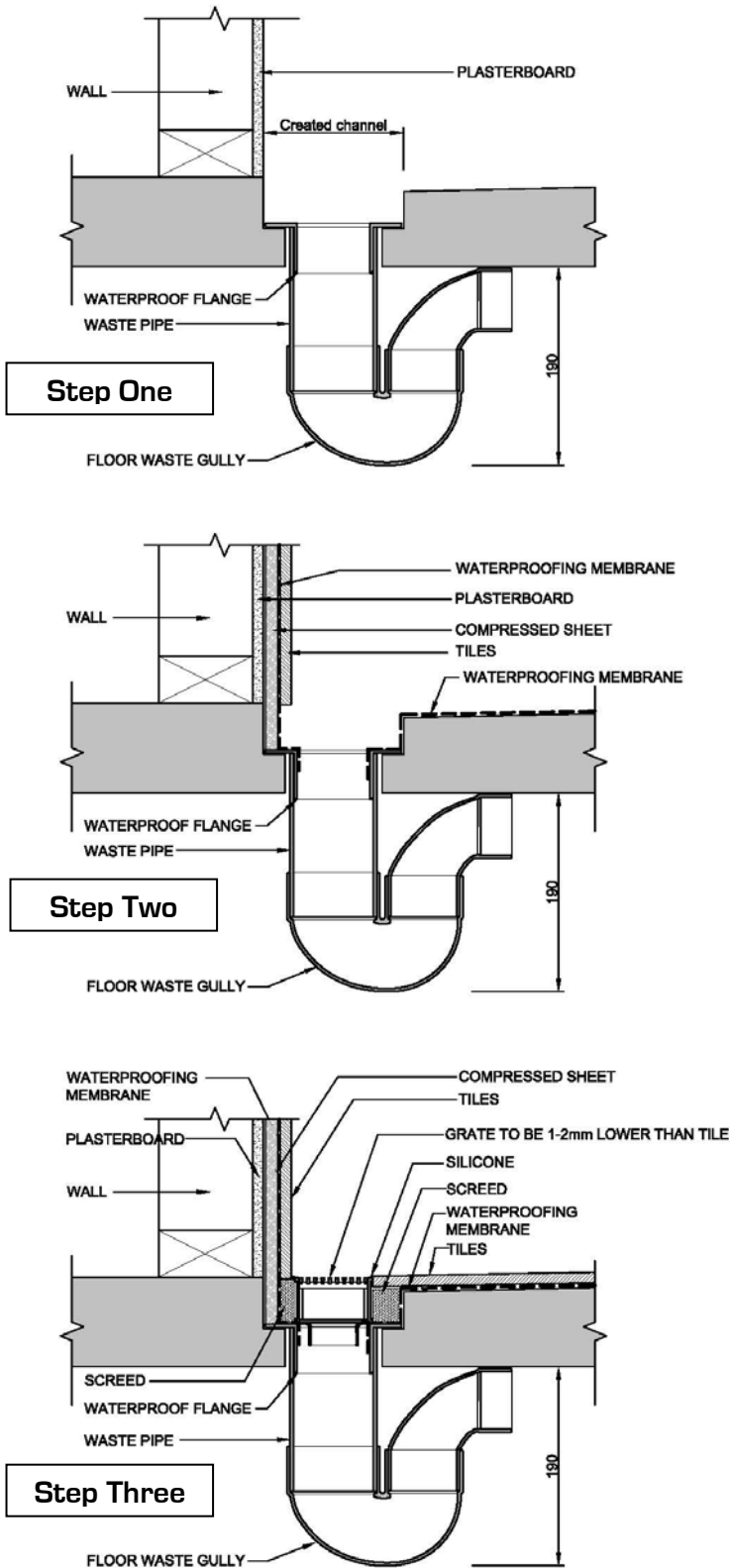


ALLPROOF INDUSTRIES SLIMLINE ARCHITECTURAL CHANNEL SYSTEM GENERIC FLOOR WITH WALL INSTALL



For 38mm and 65mm channels, the created channel should be made 100mm wide and at a minimum depth of 35mm.

For 100mm channels, the created channel should be made 135mm wide and at a minimum depth of 10mm.