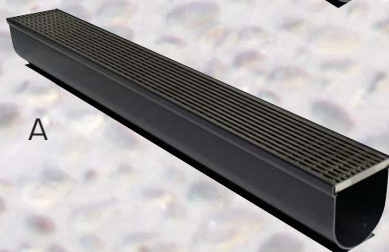
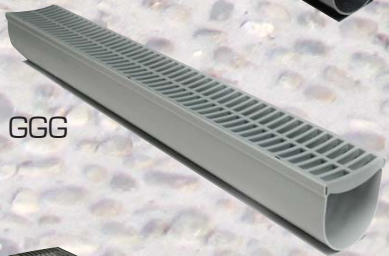


ALLPROOF

I N D U S T R I E S

DOMESTIC DRAINAGE CHANNEL

OPTIONS AVAILABLE



CODES	DESCRIPTIONS
120BGB 120GGG 120BLAS 120GLAS 120AB 120AG	120mm x 3m Black Channel & Grates 120mm x 3m Grey Channel & Grates 120mm x 3m Black Channel & Laser Grates 120mm x 3m Grey Channel & Laser Grates 120mm x 3m Black Channel & Architectural Grates 120mm x 3m Grey Channel & Architectural Grates
120BGB 1m 120GGG 1m 120BLAS 1m 120GLAS 1m 120AB 1m 120AG 1m	120mm x 1m Black Channel & Grate 120mm x 1m Grey Channel & Grate 120mm x 1m Black Channel & Laser Grate 120mm x 1m Grey Channel & Laser Grate 120mm x 1m Black Channel & Architectural Grate 120mm x 1m Grey Channel & Architectural Grate
E120B E120G J120B J120G F120	Endcap 120mm Drainage Channel Black Endcap 120mm Drainage Channel Grey Joiner 120mm Drainage Channel Black Joiner 120mm Drainage Channel Grey 90mm Vertical Spigot Outlet
120B90A 120G90A 120BLAS90A 120GLAS90A 120AB90A 120AG90A	120mm Black 90 degree corner Channel & Grate 120mm Grey 90 degree corner Channel & Grate 120mm Black 90 degree corner Channel & Laser Grate 120mm Grey 90 degree corner Channel & Laser Grate 120mm Black 90 degree corner Channel & Architectural Grate 120mm Grey 90 degree corner Channel & Architectural Grate
120SUMPB 120SUMP 120SUMPBLAS 120SUMPGLAS 120SUMPAB 120SUMPAG	120mm x 300mm Inline Sump & Grate Black 120mm x 300mm Inline Sump & Grate Grey 120mm x 300mm Inline Sump & Joiner Laser Black 120mm x 300mm Inline Sump & Joiner Laser Grey 120mm x 300mm Inline Sump & Joiner Architectural Black 120mm x 300mm Inline Sump & Joiner Architectural Grey



CHANNEL & GRATE (AVAILABLE IN 1 OR 3 MTR LENGTHS)



CHANNEL END CAP



CHANNEL JOINER



90 DEGREE CORNER GRATE



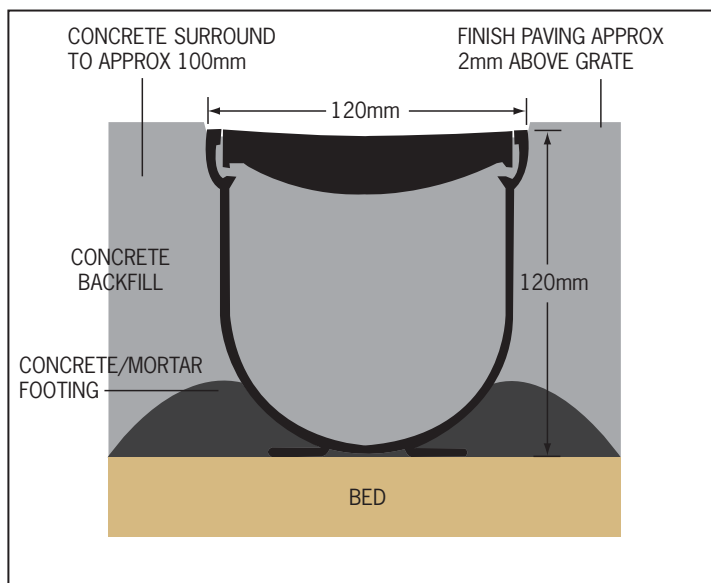
INLINE SUMP & JOINER



90MM VERTICAL SPIGOT OUTLET

BASIC INSTALLATION:

- Preform a trench on thick layer of compacted sand or base-course.
- If needed cut channel & grate to length using a Hack Saw.
- Attach stop ends to channel. Seal using silicone sealant.
- Lay channel & grate into preformed trench.
- Stop ends have outlets that can be drilled out to allow for 90mm or 100mm pipe. Drill out accordingly and connect to pipe or a sump box.
- Fix the channels into place and bed into a mortar/concrete mix. This will allow the channel feet to remain flat on the compacted base and also prevents the channel from moving during the pouring of concrete. Pour concrete around channel to fill void of preformed trench where applicable.
- Ensure channel is not sitting proud of concrete.
- Tape can be used to prevent concrete from entering the grate during pouring.



ALLPROOF

I N D U S T R I E S

+649 481 8020 info@allproof.co.nz www.allproof.co.nz